

Test: (2020) Primary 5 Science (Term 4) - SCGS

Points: 62 points

Name: _____

Score: _____

Date: _____

Signature: _____

Select multiple choice answers with a cross or tick:

Only select one answer

Can select multiple answers



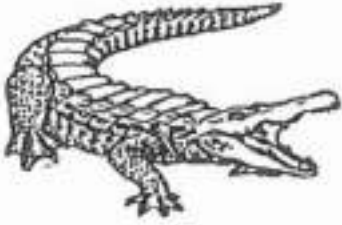

Question 1 of 64

Primary 5 Science (Term 4)

2 pts

For each question, four options are given. One of them is the correct answer.

Study the classification table below.

Group A	Group B
 <p data-bbox="486 660 539 698">bat</p>  <p data-bbox="475 1075 561 1113">zebra</p>	 <p data-bbox="1024 660 1157 698">crocodile</p>  <p data-bbox="1050 1075 1136 1113">parrot</p>

How are the above animals classified?

- A) where they live
- B) the way they move
- C) their number of legs
- D) the way they reproduce

Question 2 of 64

Primary 5 Science (Term 4)

2 pts

Organism X lives in the school garden and its characteristics are noted as follows:

- needs air
- unable to fly
- able to reproduce
- can make its own food

Which one of the following could Organism X be?

- A) ant
- B) frog
- C) rose plant
- D) mushroom

Question 3 of 64

Primary 5 Science (Term 4) 2 pts

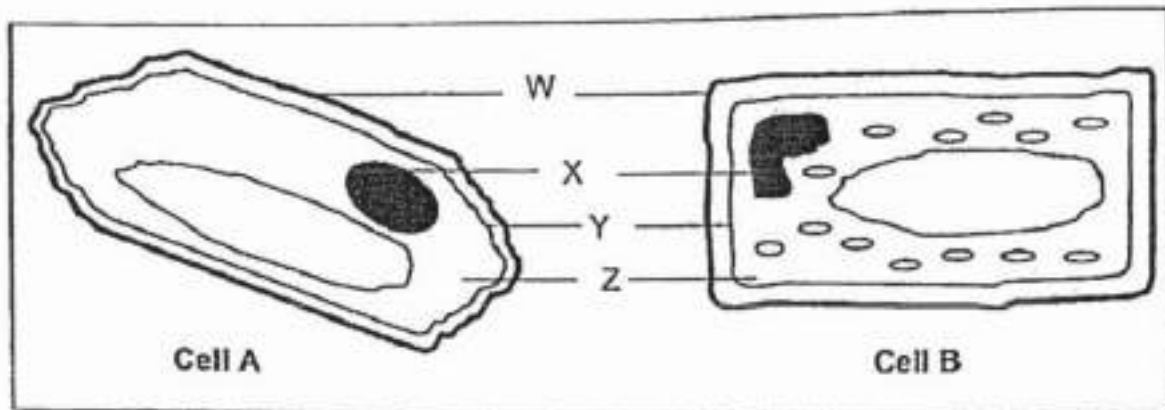
Which one of the following statements is true about the digestive system?

- A) digestion begins in the stomach
- B) digested food is absorbed in the gullet
- C) water is absorbed in the large intestine
- D) undigested food is absorbed in the small intestine

Question 4 of 64

Primary 5 Science (Term 4) 2 pts

The diagrams below show two different cells, A and B, from the same plant.



Which part of the cell, W, X, Y or Z, controls cellular activities in a cell?

- A) W
- B) X
- C) Y
- D) Z

Question 5 of 64

Primary 5 Science (Term 4) 2 pts

The differences between inhaled and exhaled air are shown in the table. Which of the following are correct?

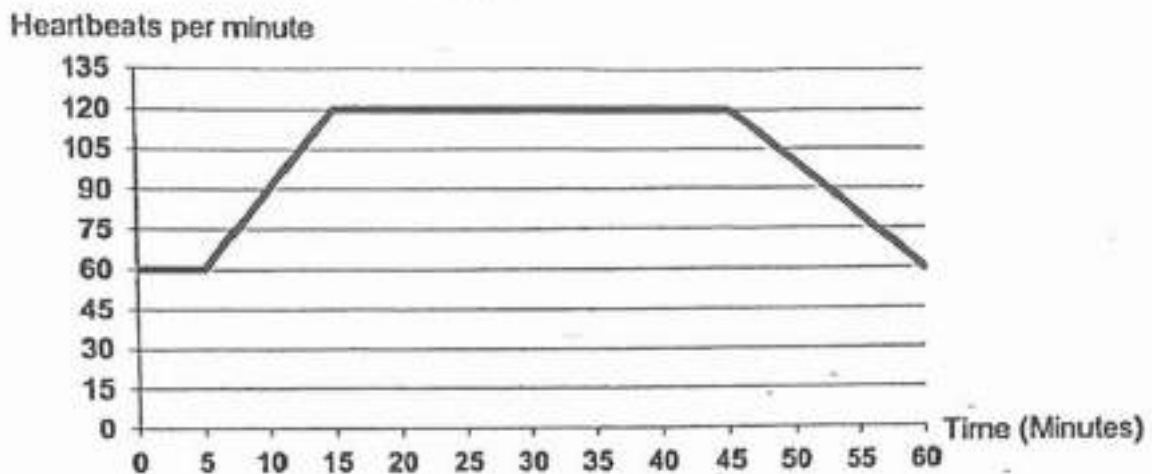
	Inhaled Air	Exhaled Air
A	Is warmer	Is cooler
B	Contains more oxygen	Contains less oxygen
C	Contains less water vapour	Contains more water vapour
D	Contains some nitrogen	Contains some nitrogen

- A) A and D only
 B) B, C and D only
 C) A, C and D only
 D) A, B, C and D

Question 6 of 64

Primary 5 Science (Term 4) 2 pts

Minghua recorded his heartbeat rate within 1 hour. He plotted a graph with the data he obtained as shown below.



Based on the graph above, how long did Minghua exercise?

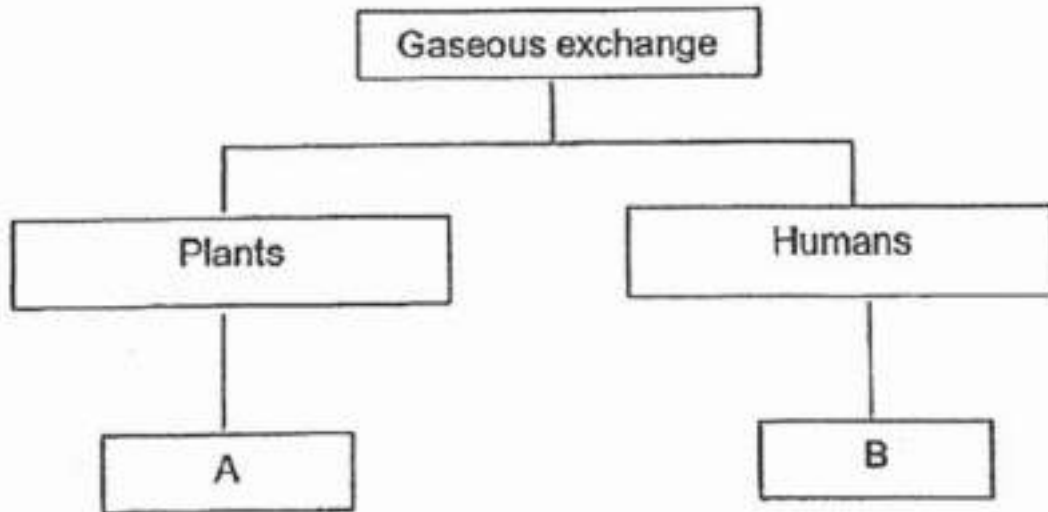
- A) 30 minutes
 B) 35 minutes
 C) 40 minutes
 D) 60 minutes

Question 7 of 64

Primary 5 Science (Term 4)

2 pts

Look at the classification chart below.



Which of the following represent **A** and **B** correctly?

	A	B
1)	leaves	gullet
2)	roots	windpipe
3)	stem	nose
4)	stomata	lungs

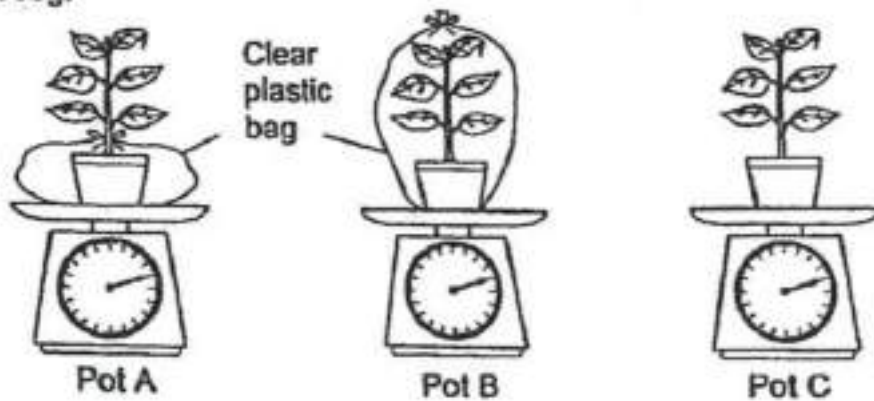
- A) 1
 B) 2
 C) 3
 D) 4

Question 8 of 64

Primary 5 Science (Term 4)

2 pts

William conducted an experiment using three similar potted plants, A, B and C. He watered the three potted plants with the same amount of water and placed them in a garden. The mass of each potted plant at the start of the experiment was 2000g.



Which of the following is correct about the mass of each potted plant after one day?

	Lightest	→	Heaviest
1)	A		C
2)	B		C
3)	C		B
4)	C		A

- A) 1
 B) 2
 C) 3
 D) 4

Question 9 of 64

Primary 5 Science (Term 4)

2 pts

Ben removed only the food-carrying tubes of the stem at X.



Why did the roots die after some time?

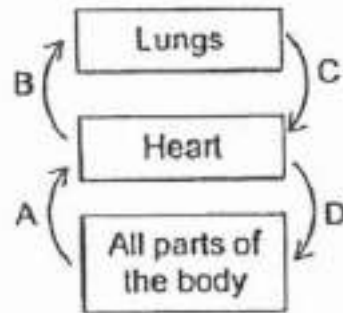
-
- A) the roots could not take in mineral salts
 - B) the roots were unable to keep the plant upright
 - C) the stem could not transport food to the roots
 - D) the stem could not transport water to the leaves

Question 10 of 64

Primary 5 Science (Term 4)

2 pts

The diagram below shows the direction of blood flow in a human body.



Oxygenated blood is blood rich in oxygen and deoxygenated blood is blood poor in oxygen. Which of the following describes the type of blood correctly?

	A	B	C	D
1)	oxygenated	oxygenated	deoxygenated	deoxygenated
2)	deoxygenated	deoxygenated	oxygenated	oxygenated
3)	oxygenated	deoxygenated	oxygenated	deoxygenated
4)	deoxygenated	oxygenated	deoxygenated	oxygenated

- A) 1
 B) 2
 C) 3
 D) 4

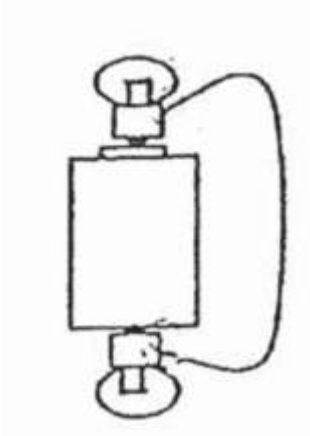
Question 11 of 64

Primary 5 Science (Term 4)

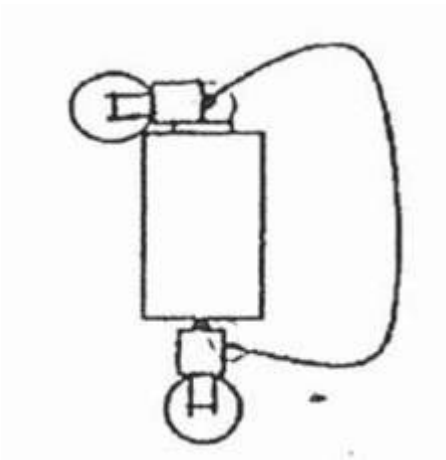
2 pts

Which one of the following electric circuits allows only 1 bulb to light up?

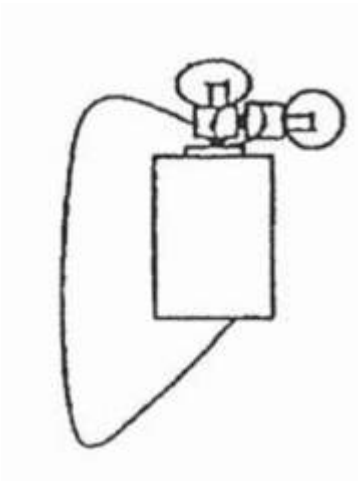
A)



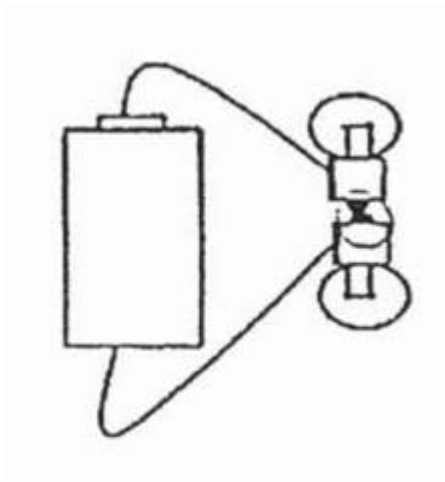
B)



C)



D)

**Question 12 of 64**

Primary 5 Science (Term 4)

2 pts

Which of the following materials are conductors of electricity?

- A: Aluminium. D: Rubber
B: Cotton. E: Silver
C: Glass

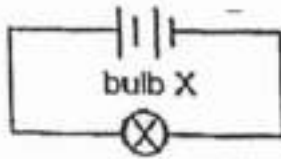
-
- A)** A and C only
 B) A and E only
 C) B,D and E only
 D) B,D and C only

Question 13 of 64

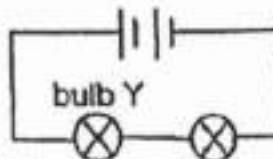
Primary 5 Science (Term 4)

2 pts

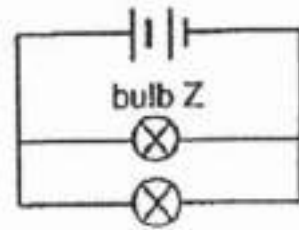
Study the three circuits, A, B and C, below.



circuit A



circuit B



circuit C

All the bulbs and batteries in the three circuits are the same. Which of the following statements about the brightness of the bulbs is/ are correct?

- A: Bulb X is as bright as bulb Y.
- B: Bulb X is as bright as bulb Z.
- C: Bulb Z is brighter than bulb Y.
- D: Bulb Z is brighter than bulb X.

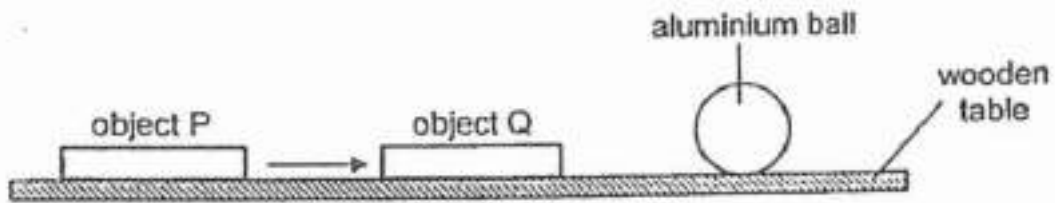
- A) A and B only
- B) A and C only
- C) B and C only
- D) D and C only

Question 14 of 64

Primary 5 Science (Term 4)

2 pts

In the diagram below, when object P was slowly brought close to object Q, the aluminium ball was pushed off the wooden table by object Q.



What are objects P and Q likely to be?

	Object P	Object Q
1)	magnet	steel rod
2)	steel rod	magnet
3)	aluminium rod	steel rod
4)	magnet	magnet

- A) 1
- B) 2
- C) 3
- D) 4

Question 15 of 64

Primary 5 Science (Term 4)

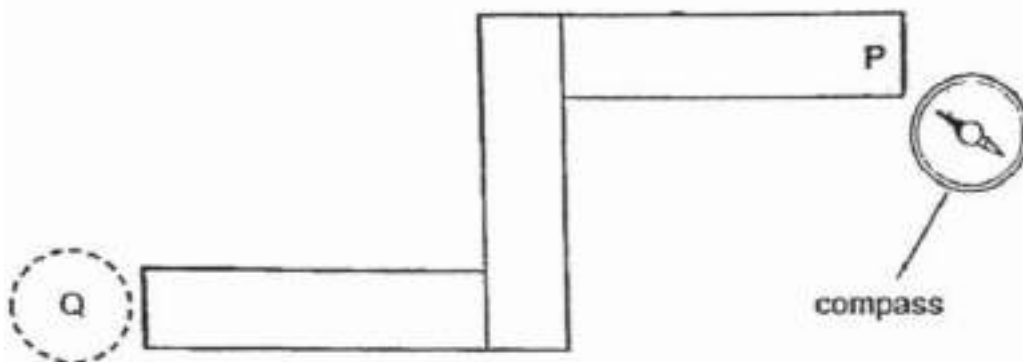
2 pts

A compass has a small magnet that can rotate freely as shown.

north pole of
small magnet

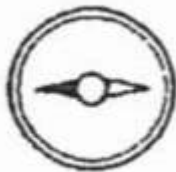


Three bar magnets were arranged in the figure shown below, where the ends were attracted to one another. A compass was placed at end P and the direction of the compass needle is shown in the figure below.



What would the direction of the needle be when the compass is placed at Q?

A)



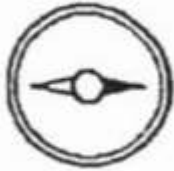
B)



C)



D)

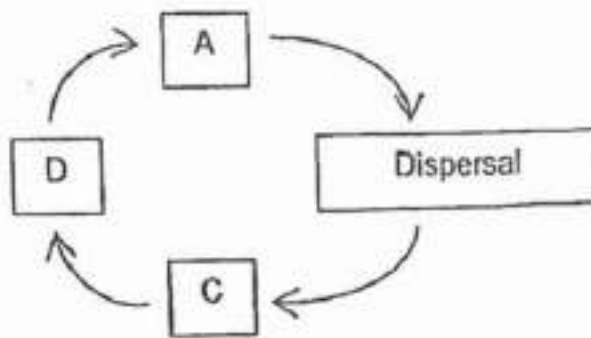


Question 16 of 64

Primary 5 Science (Term 4)

2 pts

The diagram below shows the processes in the development of a plant.



The process of seed dispersal is shown above. When would the fruits develop?

- A) At stage A
- B) At stage C
- C) At stage D
- D) Between stages C and D

Question 17 of 64

Primary 5 Science (Term 4)

2 pts

Jerry germinated a seed each from plants A, B and C. He recorded his observation of their growth in the table below.

Observation	Number of days after each seed was planted		
	A	B	C
Root appears	2	2	2
Shoot appears	3	3	3
First flower appears	30	20	40
First fruit appears	40	40	80

Based on the information above, which of the following statements is true?

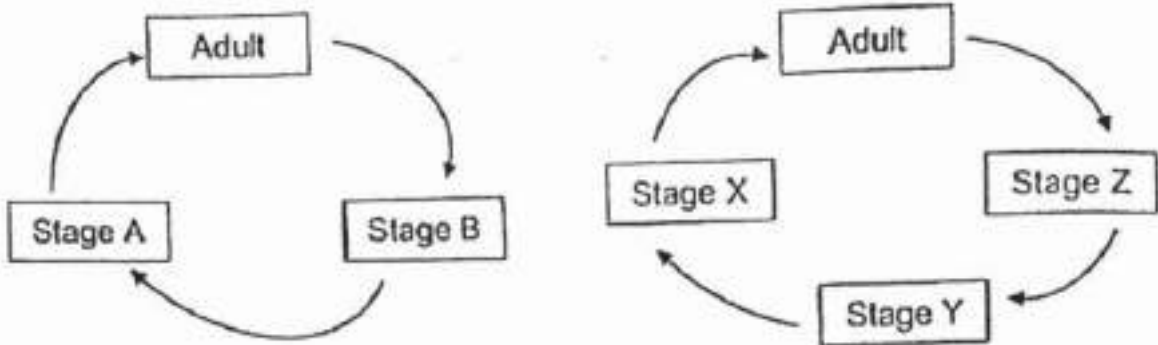
- A) Plant A was pollinated first
- B) Plant B was alive for the shortest period of time
- C) Plant C grew the greatest number of flowers
- D) All 3 seeds took the same amount of time to germinate

Question 18 of 64

Primary 5 Science (Term 4)

2 pts

The diagrams below show the stages in the life cycles of two insects.



Based on the diagram above, which of the following could stages A and X be?

	Stage A	Stage X
1)	Egg	Larva
2)	Larva	Nymph
3)	Nymph	Egg
4)	Nymph	Pupa

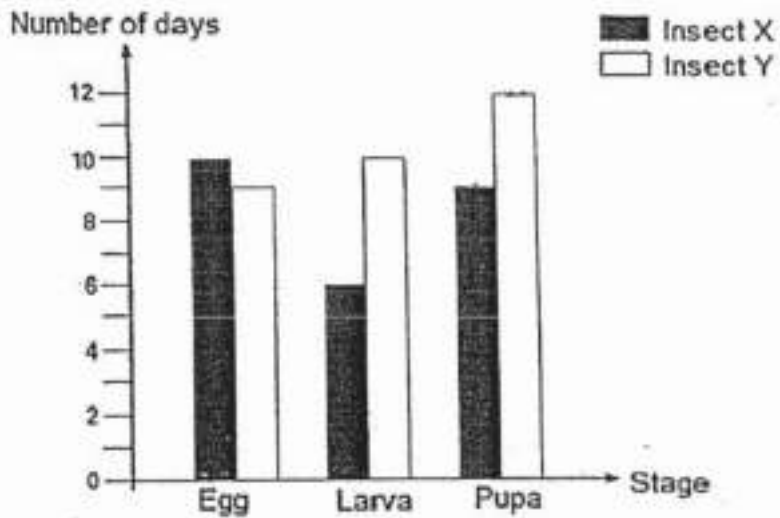
- A) 1
 B) 2
 C) 3
 D) 4

Question 19 of 64

Primary 5 Science (Term 4)

2 pts

The graph below shows the number of days each stage in the life cycle of Insect X and Insect Y last.



Based on the graph above, at which stage will Insect X and Insect Y be on the 17th day after the eggs are laid?

	Insect X	Insect Y
1)	Larva	Pupa
2)	Larva	Larva
3)	Pupa	Pupa
4)	Pupa	Larva

- A) 1
 B) 2
 C) 3
 D) 4

Question 20 of 64

Primary 5 Science (Term 4)

2 pts

The diagram below shows a complete flower.



Flowers W, X and Y are from the same plant. However, some of their parts have been removed before pollination could occur as shown below.



Which flowers are able to develop into fruits?

11

- A) W and X only
- B) Y and X only
- C) W and Y only
- D) W, X and Y

Question 21 of 64

Primary 5 Science (Term 4) 2 pts

The diagram below shows a rice cooker that Mrs Bani used to cook rice. When she opened it after the rice was cooked, she saw white mist coming out of the rice cooker.



Which of the following about white mist is correct?

White mist is	There is white mist because
1) steam	water evaporated from the cooked rice and escaped from the rice cooker.
2) water vapour	water evaporated from the cooked rice and escaped from the rice cooker.
3) water droplets	water vapour from the cooked rice condensed in the air outside the rice cooker.
4) water droplets	water vapour from the cooked rice condensed in the air inside the rice cooker.

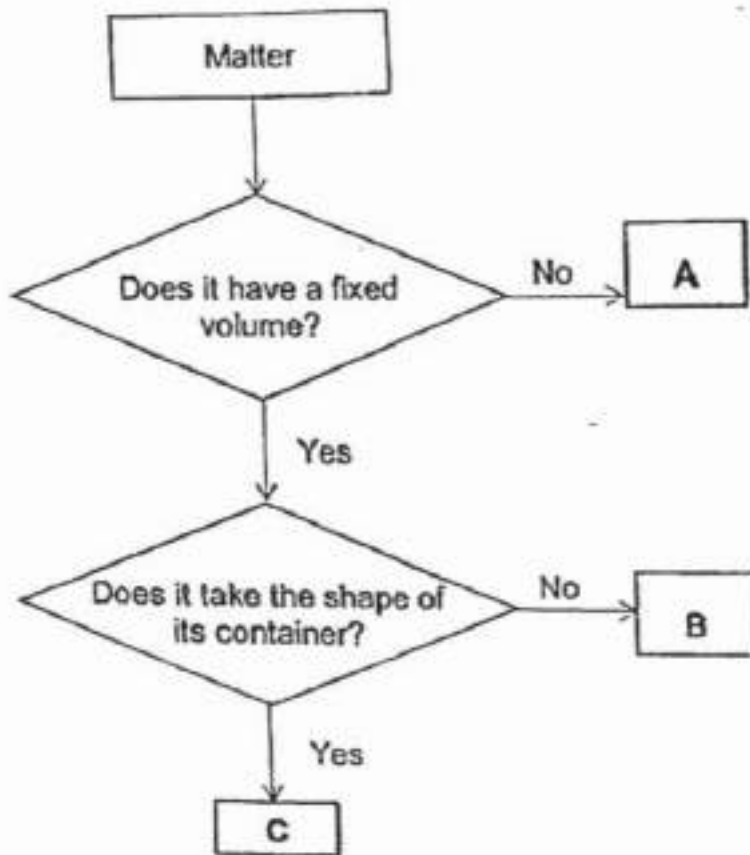
- A) 1
 B) 2
 C) 3
 D) 4

Question 22 of 64

Primary 5 Science (Term 4)

2 pts

Study the flow chart below.



Which one of the following items in the box below best represents A, B and C?

	A	B	C
1)	Oxygen	Rock	Sunblock lotion
2)	Oxygen	Sunblock lotion	Rock
3)	Rock	Sunblock lotion	Oxygen
4)	Sunblock lotion	Rock	Oxygen

- A) 1
 B) 2
 C) 3
 D) 4

Question 23 of 64

Primary 5 Science (Term 4)

2 pts

Gina conducted an experiment and recorded the results as shown in the table below.

Container	Exposed surface area of water (cm ²)	Fan speed	Temperature of water (°C)	Time taken for water to evaporate completely (minutes)
A	70	2	45	72
B	70	2	69	53
C	70	2	92	27

The aim of her experiment is to find out if the _____.

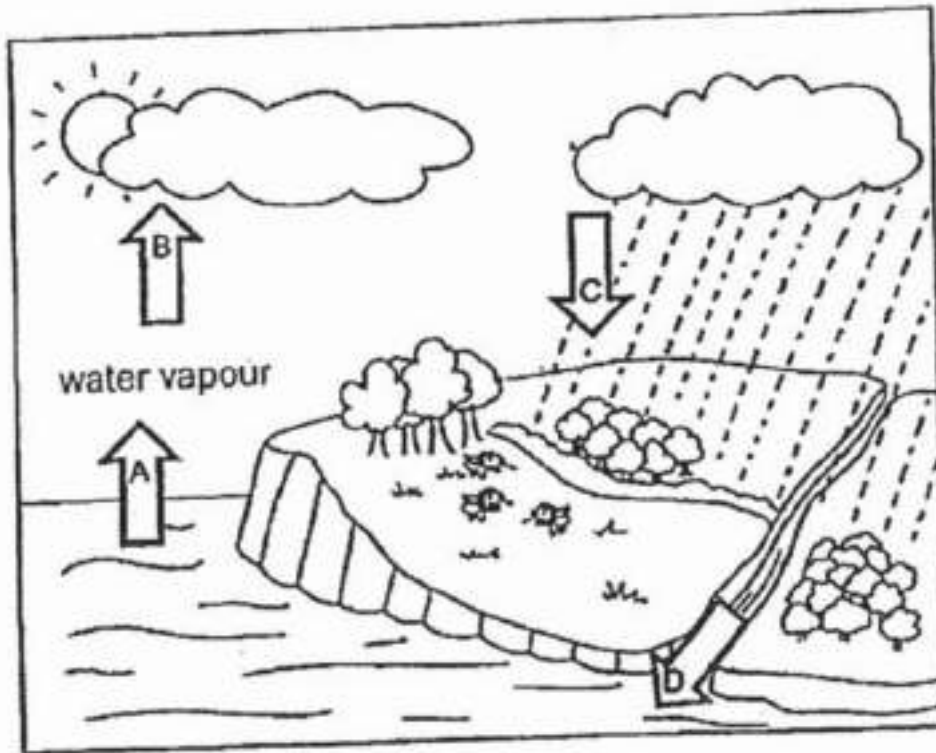
- A) presence of wind affects rate of evaporation
- B) temperature of water affects the rate of evaporation
- C) time taken for evaporation affects temperature of water
- D) amount of exposed surface area affects the rate of evaporation

Question 24 of 64

Primary 5 Science (Term 4)

2 pts

The water cycle is shown below.



Which arrows represent processes when there is a change in the states of matter?

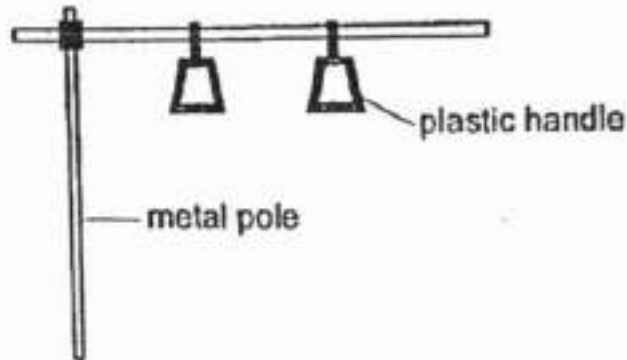
- A) A and B only
- B) A and D only
- C) B and C only
- D) C and D only

Question 25 of 64

Primary 5 Science (Term 4)

2 pts

The diagram below shows part of a metal pole and plastic handles inside a public bus.



Aini was standing inside an air-conditioned bus. She held onto the plastic handle with one hand while holding on to the metal pole with her other hand.

Her hands felt that the metal pole was colder than the plastic handle.

Which of the following explains why her hands felt that the metal pole was colder than the plastic handle?

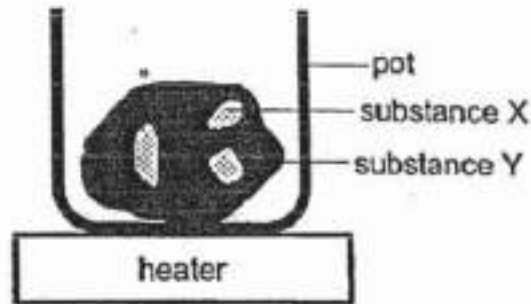
- A) The metal pole had a lower temperature than the plastic handle
- B) The metal pole had a greater surface area than the plastic handle
- C) The plastic handle gained heat from the air faster than the metal pole
- D) The metal pole gained heat from her hand faster than the plastic handle

Question 26 of 64

Primary 5 Science (Term 4)

2 pts

Raju placed a solid made of two substances, X and Y in a pot as shown below.



The melting points of substances X and Y are as follows.

Substance	X	Y
Melting point (°C)	490	330

He wants to collect the solids of substance X only.

At what temperature should he set the heater such that he can obtain the solids of substance X?

- A) 310
- B) 340
- C) 490
- D) 500

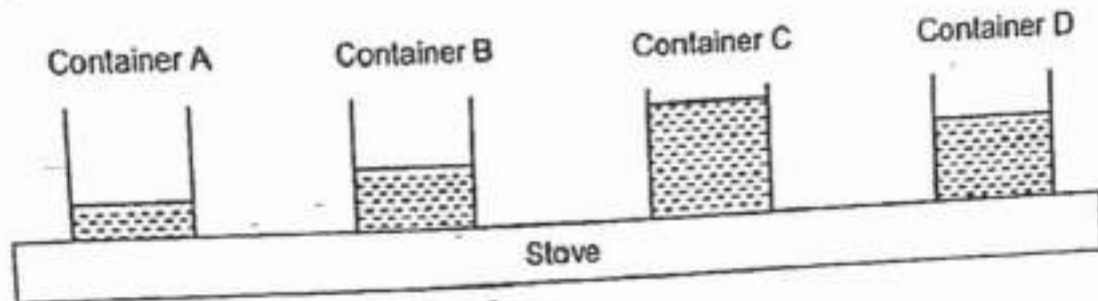
Question 27 of 64

Primary 5 Science (Term 4)

2 pts

Four containers A, B, C and D of the same size and thickness were made of different materials. They were filled with equal amounts of water and were heated for 60 minutes.

The diagram below shows the amount of water left in each container at the end of 60 minutes.



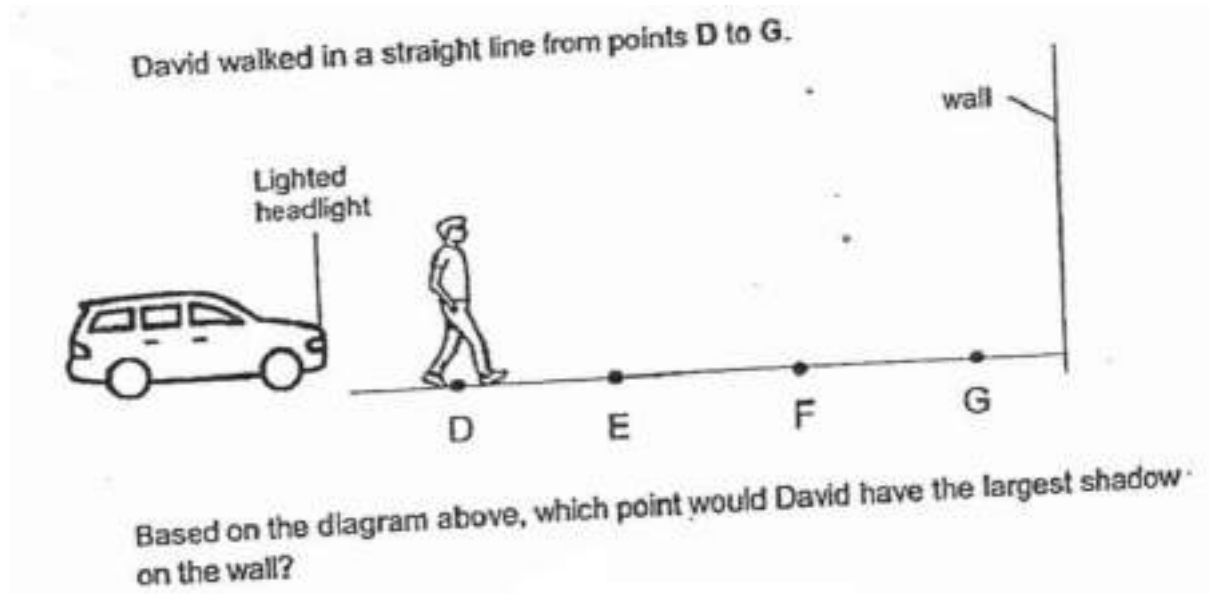
Arrange the Containers, A, B, C and D, starting from the poorest conductor of heat to the best conductor of heat.

- A) A, B, D, C
- B) C, D, B, A
- C) B,D,C,A
- D) D,C,B,A

Question 28 of 64

Primary 5 Science (Term 4)

2 pts



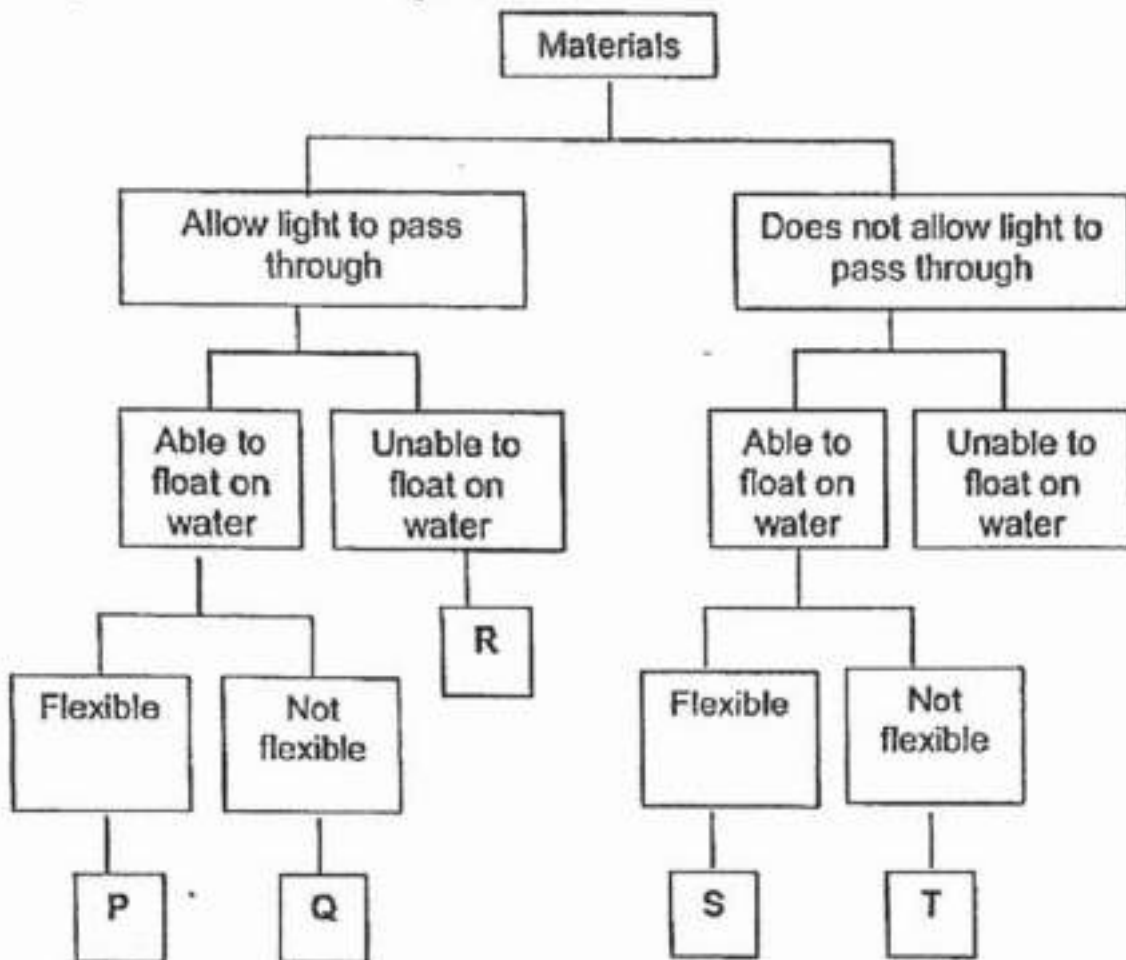
- A) D
- B) E
- C) F
- D) G

Question 29 of 64

Primary 5 Science (Term 4)

0 pts

Study the classification diagram below.



What is the similarity between Material P and Material T?

Question 30 of 64

Primary 5 Science (Term 4)

0 pts

b) State two differences between Material Q and S

Question 31 of 64

Primary 5 Science (Term 4) 0 pts

Based on the classification diagram, write down the letter (P, Q, R, S, T) for each of the materials given below. [1m]

Material	Represented by letter
Clear Glass	
Wood	

Question 32 of 64

Primary 5 Science (Term 4) 1 pt

The table below provides information about three cells P, Q and R.

A tick (✓) indicates the cell has this cell part.

Parts of a cell	Cell P	Cell Q	Cell R
Cell membrane	✓	✓	✓
Cell wall	✓	✓	
Chloroplast		✓	
Nucleus	✓	✓	✓

Based on the table, which cell parts are found in all three cells?

[1m]

- A) Nucleus
- B) Cell wall
- C) Chloroplast
- D) Cell membrane

Question 33 of 64

Primary 5 Science (Term 4)

0 pts

Complete the table by identifying where cells P, Q and R are taken from. [2m]

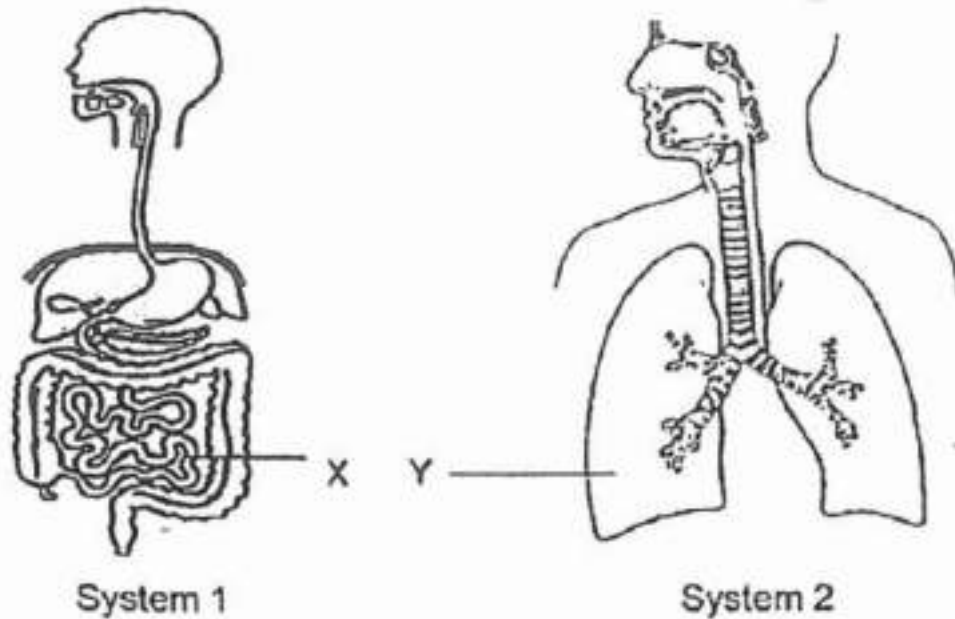
	Cell taken from:	Cell
i)	seed	.
ii)	flower	
iii)	leaf	.
iv)	human skin	

Question 34 of 64

Primary 5 Science (Term 4)

0 pts

The diagrams below shows the parts of 2 systems in the human body.



Identify the systems,

System 1: _____

System 2: _____

Question 35 of 64

Primary 5 Science (Term 4)

1 pt

How do the substances in the blood differ in X and Y?

Blood leaving X carries ____ digested food than the blood entering it

- A) more
- B) less

Question 36 of 64

Primary 5 Science (Term 4)

1 pt

Blood leaving Y carries ____ carbon dioxide than the blood entering it

- A) more
- B) less

Question 37 of 64

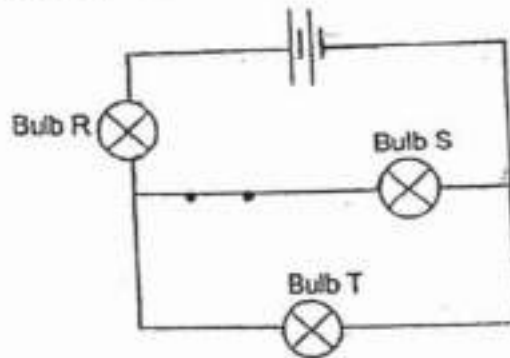
Primary 5 Science (Term 4) 0 pts

Name the system that transports the substances name in (b) to all parts of the body

Question 38 of 64

Primary 5 Science (Term 4) 0 pts

Shaun set up an electric circuit, with bulbs R, S and T as shown in the circuit diagram below. He then closes the switch.



What will happen to Bulb R if Bulb S is fused?

[1m]**Question 39 of 64**

Primary 5 Science (Term 4) 1 pt

b) One of the bulbs was fused and the remaining bulbs did not light up when the switch is closed. Which bulb was fused?

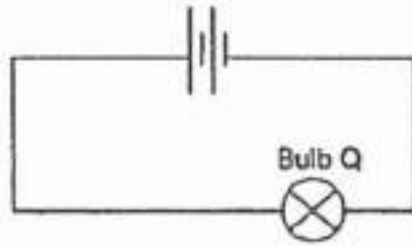
- A) R
- B) S
- C) T

Question 40 of 64

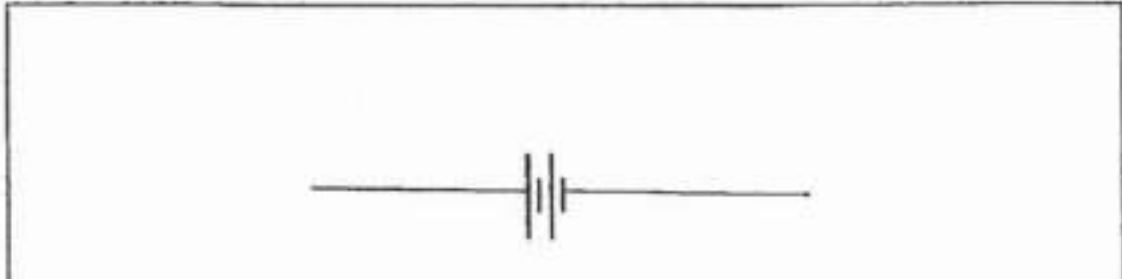
Primary 5 Science (Term 4)

0 pts

Shaun was given the following circuit.



In the box provided below, draw a circuit diagram to show how Shaun can connect 2 batteries, 3 bulbs, and some wires such that all the bulbs will shine with the same brightness as bulb Q. [2m]



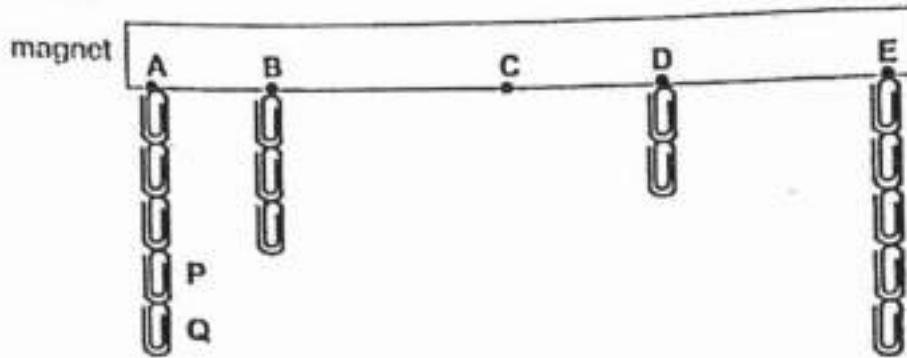
Please type "done" to proceed to the next question

Question 41 of 64

Primary 5 Science (Term 4)

0 pts

Jasper wanted to find out the magnetic strength of a magnet at parts **A**, **B**, **C**, **D** and **E**. He observed the number of paper clips attracted at each part as shown below.



Based on Jasper's observation, what could he conclude about the magnetic strength of the poles of the magnet, **A** and **E**, and the centre, **C**? [1m]

Question 42 of 64

Primary 5 Science (Term 4)

0 pts

After Jasper removed Paper clips **P** and **Q** from the magnet, he observed that Paper clip **Q** was attracted to Paper Clip **P** as shown below. Explain why this happened. [1m]



Question 43 of 64

Primary 5 Science (Term 4) 0 pts

Jasper dropped the magnet accidentally down a long flight of stairs. When he used the magnet to attract the paper clips again, he noticed a different number of paper clips attracted to the magnet. Draw the new number of paper clips for A, B, C, D and E in the diagram below. [2m]

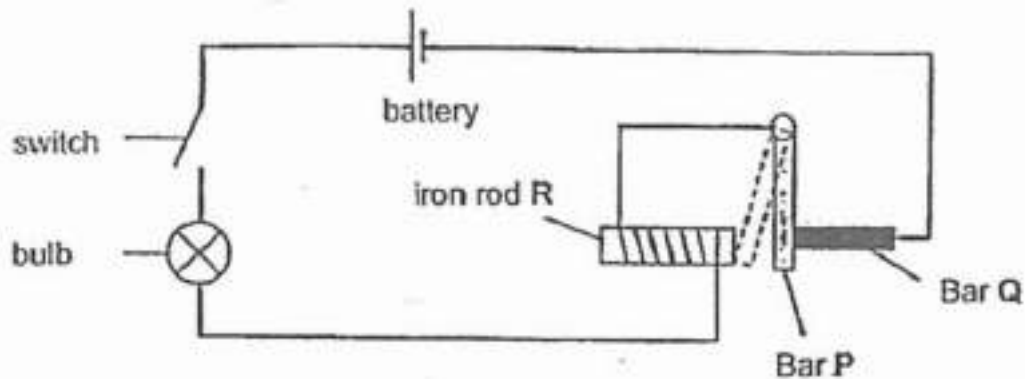


Please type "done" to proceed to the next question

Question 44 of 64

Primary 5 Science (Term 4) 0 pts

Chloe set up the circuit shown below with steel bars P and Q. When she closed the switch, the bulb lit up and Bar P moved away from Bar Q and touched the iron rod R.



Give a reason why iron is suitable for making the rod R. [1m]

Question 45 of 64

Primary 5 Science (Term 4) 0 pts

b) Explain why bar P touched the iron rod after Chloe closed the switch

Question 46 of 64

Primary 5 Science (Term 4)

0 pts

c) When bar P touched the iron rod, the bulb turned off. Explain why

Question 47 of 64

Primary 5 Science (Term 4)

0 pts

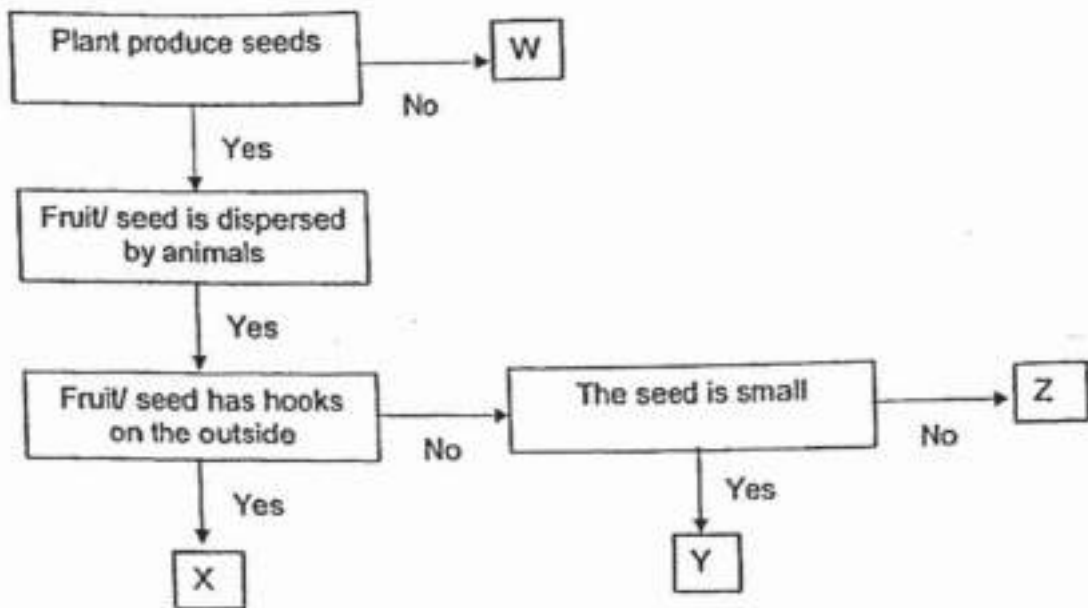
d) Can bar Q be made of wood? Explain your answer

Question 48 of 64

Primary 5 Science (Term 4)

0 pts

Study the flowchart shown below.



Based on the chart above and the diagram of the plants below, write the letters 'W, X, Y or Z' in the boxes below. [2m]



	Plants
African lovegrass	
Bird's nest fern	
Grape vine	

Question 49 of 64

Primary 5 Science (Term 4)

0 pts

b) State one other characteristic of Y that enables it to be dispersed by animals.

Question 50 of 64

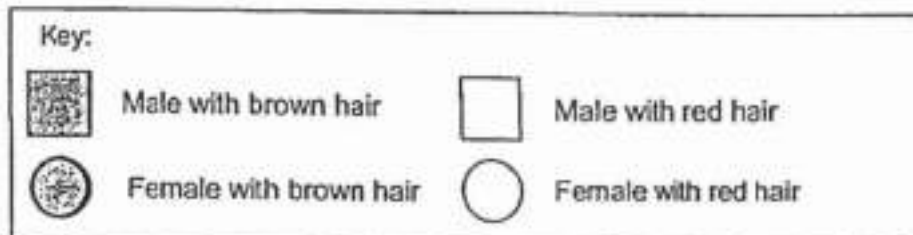
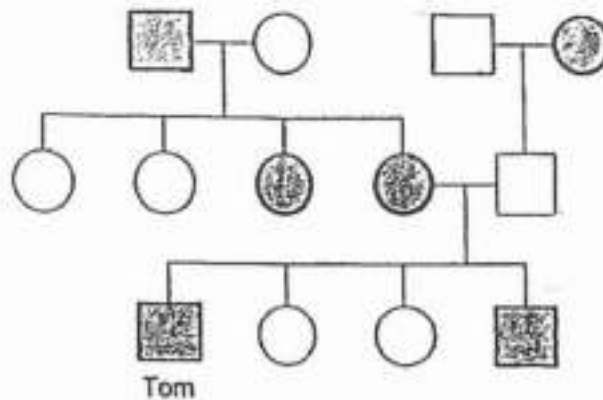
Primary 5 Science (Term 4) 0 pts

c) Describe how fruit/seed Z is dispersed by animals

Question 51 of 64

Primary 5 Science (Term 4) 1 pt

Study the family tree of Tom's family members.



a) How many siblings does Tom's mother have?

[1m]

Question 52 of 64

Primary 5 Science (Term 4) 0 pts

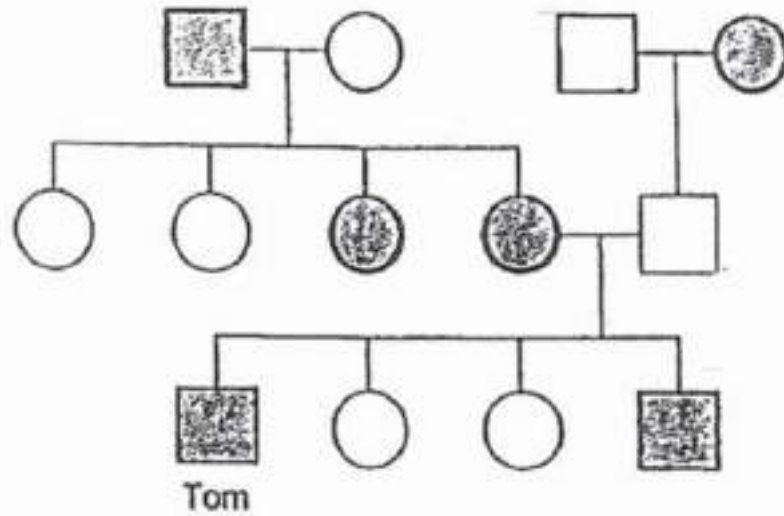
b) Based on the diagram above, explain why Tom has brown hair.

Question 53 of 64

Primary 5 Science (Term 4)

0 pts

Study the family tree of Tom's family members.



Key:



Male with brown hair



Male with red hair



Female with brown hair



Female with red hair

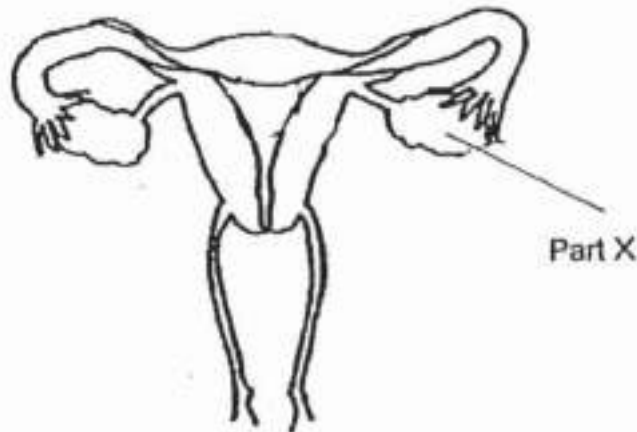
c) Put an "X" inside the symbol that represents Tom's father

Question 54 of 64

Primary 5 Science (Term 4)

0 pts

The diagram below shows the cross section of a human female reproductive system.



On the diagram above, circle and name the part where the fertilized egg develops into an unborn baby. [1m]

Please type "done" to proceed to the next question

Question 55 of 64

Primary 5 Science (Term 4)

1 pt

bi) Name part X

Question 56 of 64

Primary 5 Science (Term 4)

0 pts

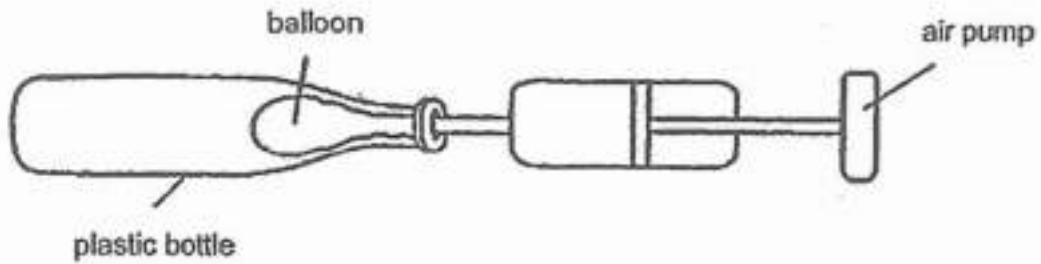
bii) If a woman is born without any part X, is she able to reproduce naturally? Explain your answer

Question 57 of 64

Primary 5 Science (Term 4)

0 pts

Alex placed a balloon into a plastic bottle as shown below.



- a) Alex tried inflating the balloon using the air pump but found it difficult to do so. Why is this so? [1m]
-

Question 58 of 64

Primary 5 Science (Term 4)

0 pts

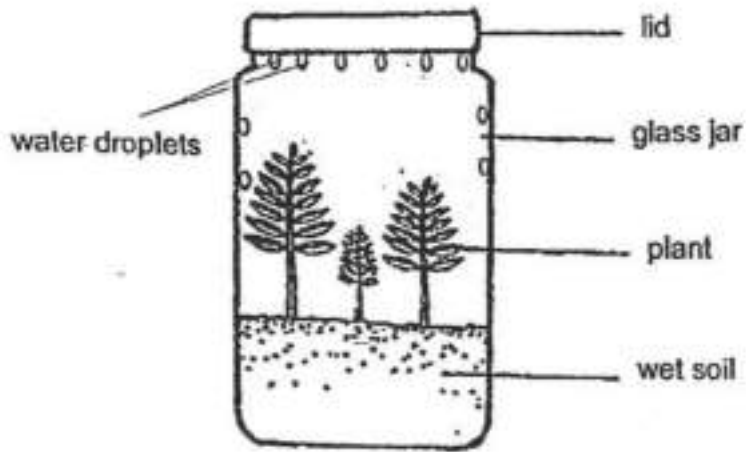
- b) Alex's friend suggested poking a hole in the plastic bottle so that the balloon can be inflated more easily. Explain why the balloon can be inflated more easily after a hole is made in the bottle
-

Question 59 of 64

Primary 5 Science (Term 4)

0 pts

The diagram below shows a terrarium where a few plants were enclosed in a container made of clear glass. It was sealed with a glass lid. After some time, some water droplets were observed on the inner sides of the container.



Explain how the water droplets were formed.

[2m]

Question 60 of 64

Primary 5 Science (Term 4)

0 pts

b) How does the glass line help the terrarium to maintain a constant supply of water over the next few weeks

Question 61 of 64

Primary 5 Science (Term 4) 0 pts

John conducted an experiment in an enclosed dark room. He placed a sheet of Material X between the lighted torch and a light sensor. He measured the amount of light that passed through Material X and recorded the results in the table below.



John repeated the experiment by increasing the number of sheets of Material X used. The table below shows the results after the experiment.

Number of sheets of Material X used	0	1	2	3	4	5
Amount of light (units)	135	100	80	Z	40	20

- a) Complete the table above by giving a suitable value for Z. [1m]

Z: _____ units

Question 62 of 64

Primary 5 Science (Term 4) 0 pts

- b) What is the relationship between the number of sheets of Material X used and the amount of light passing through?

Question 63 of 64

Primary 5 Science (Term 4) 0 pts

- c) State two variables that must be kept constant in order to conduct a fair test

Question 64 of 64

Primary 5 Science (Term 4)

0 pts

d) based on John's experiment, state a property of material X
